

- ■ ■ **IEEE Policy 2007 Panel:
Business impact of research on policy for
distributed systems and networks**

Ritu Chadha

Telcordia Technologies

chadha@research.telcordia.com

One Telcordia Drive, Piscataway NJ 08854, USA.

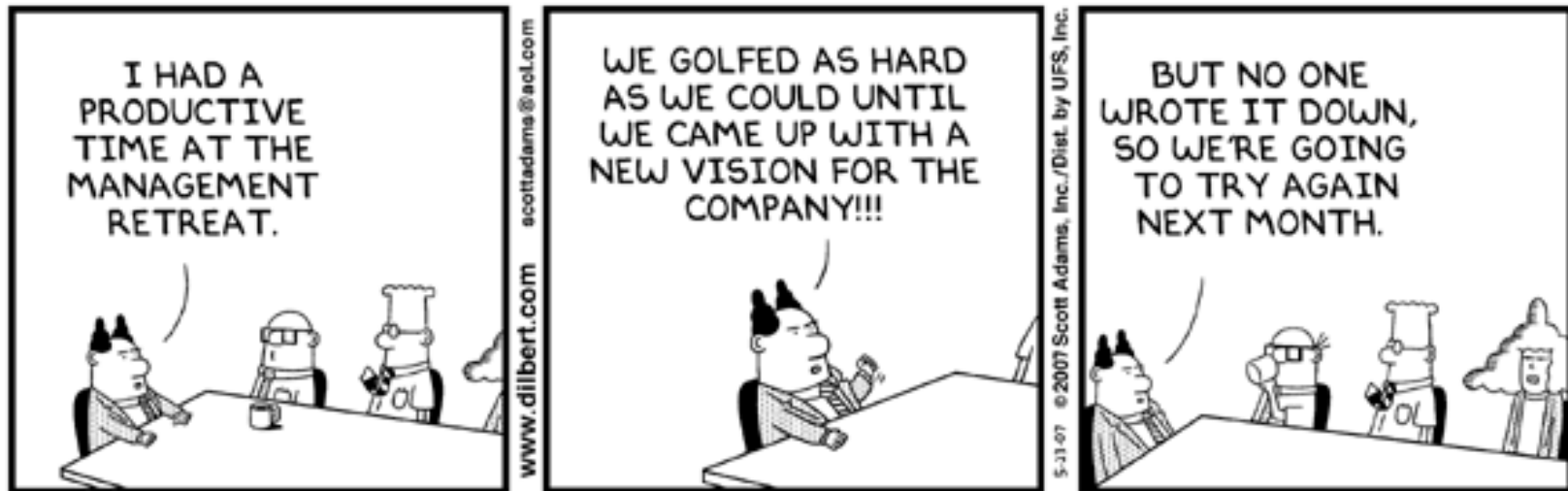
+1-732-699-2987

■ ■ ■ Panel Topics

- What success stories does the policy research community have to show for these ten years of research in terms of real business impact?
- What was envisaged ten years ago that did not materialize, and what are the reasons for that?
- Is the community still investigating these issues? What is the likelihood of success if so?
- New trends: links with the research on business-driven IT management

Focus: Policy-Based Network Management

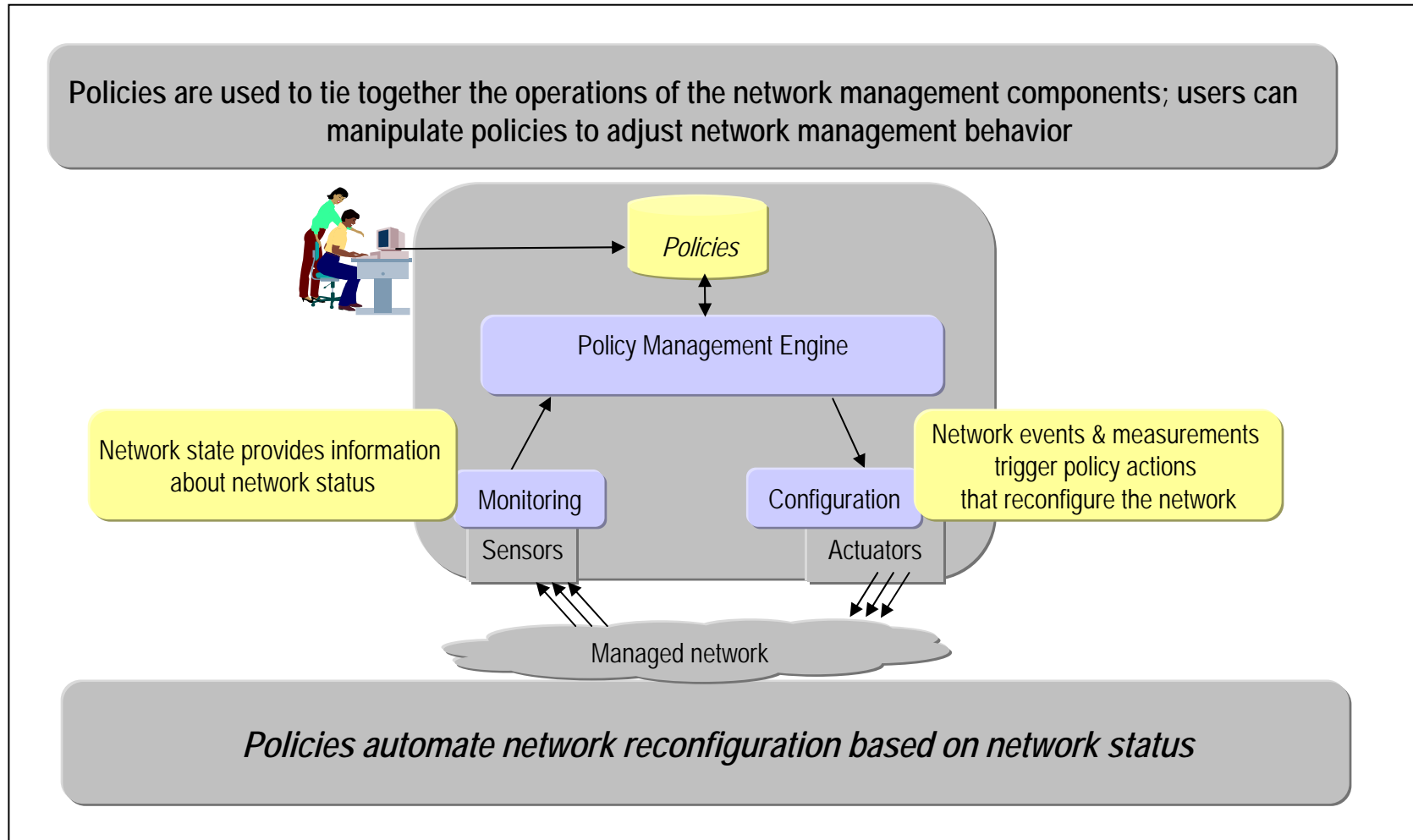
■ What we were trying to do



© Scott Adams, Inc./Dist. by UFS, Inc.

- Fortunately, I think we may remember a few key points of our vision for PBNM...

Vision: PBNM



What we did



© Scott Adams, Inc./Dist. by UFS, Inc.

- Major Accomplishments (which one are we??)
 - Policy languages
 - Policy models
 - RBAC
 - Niche applications
 - QoS, traffic engineering
 - Raised awareness
 - Books
 - This conference!

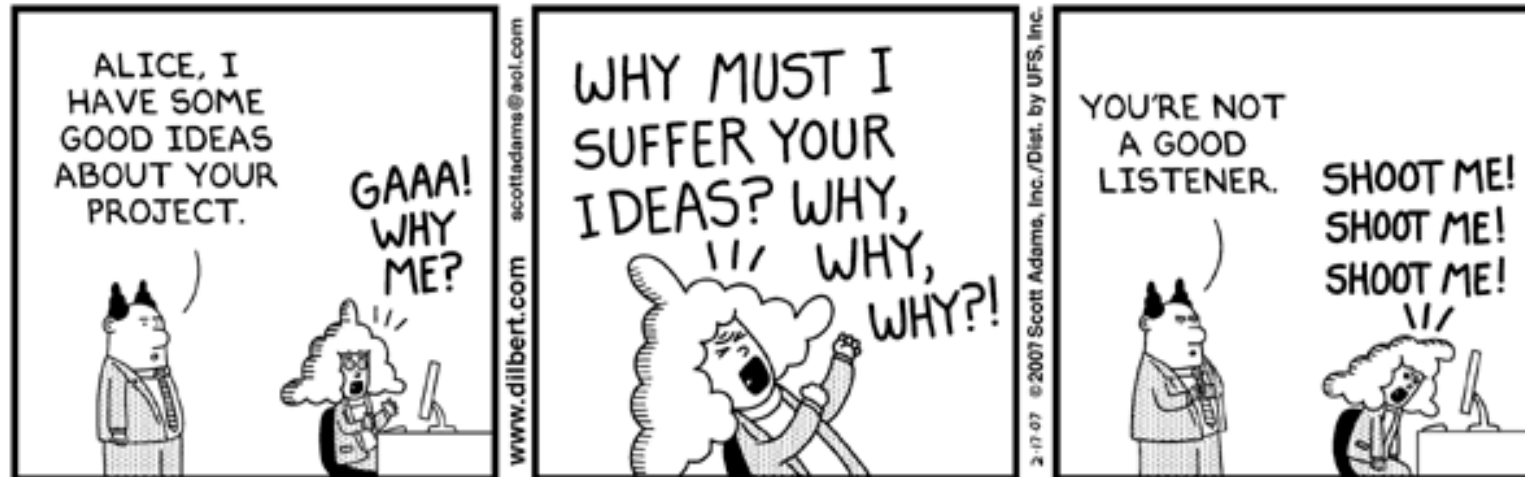
What we didn't do



© Scott Adams, Inc./Dist. by UFS, Inc.

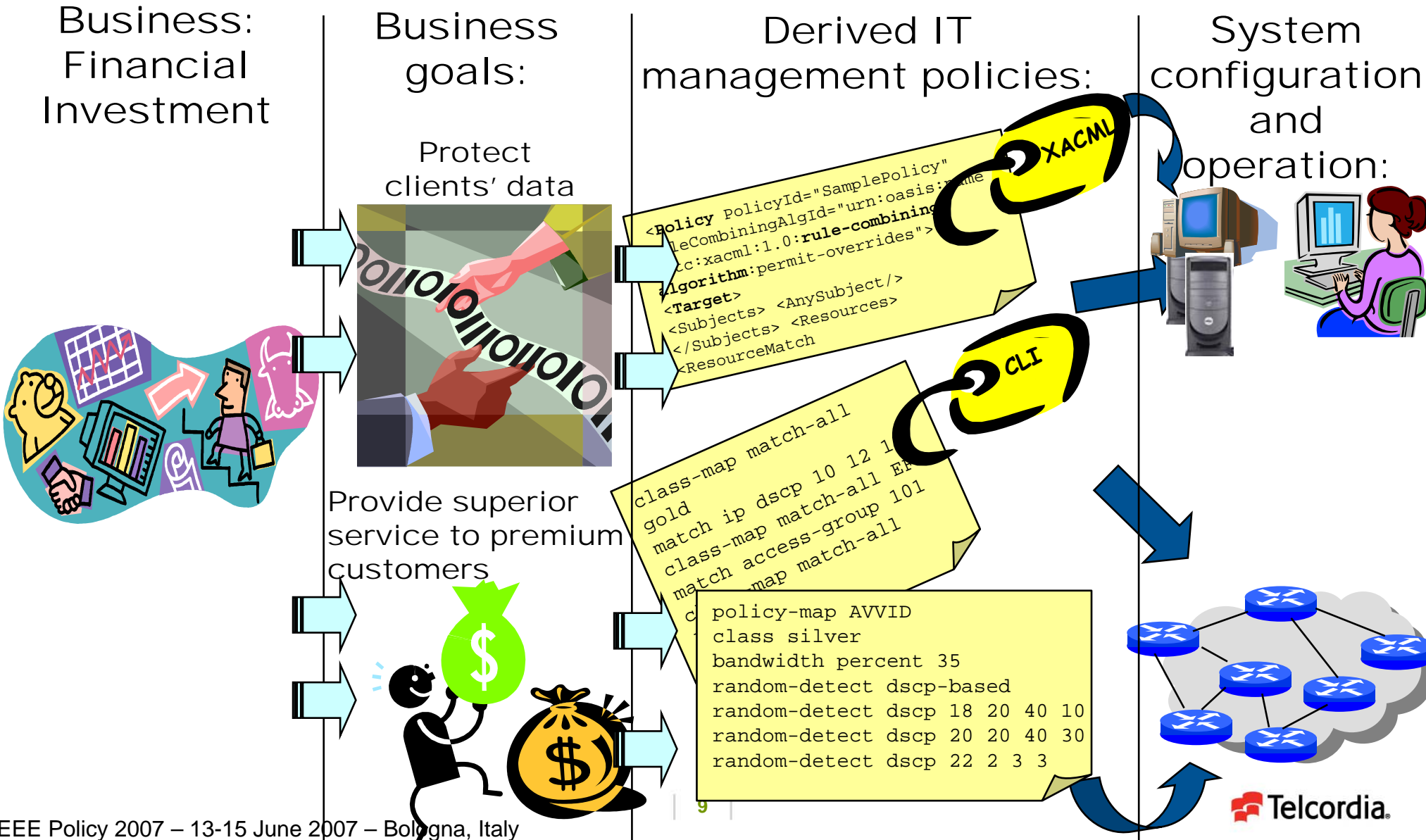
- Major open areas:
(fortunately, we don't work there either)
 - Fault-triggered reconfiguration
 - Policy Conflict Resolution
 - Large-scale deployments

What we need to do



- We need to do what we didn't do!
 - Fault-triggered reconfiguration
 - Policy Conflict Resolution
 - Large-scale deployments
 - ...
- How?
 - Drive network configuration based on business goals

What is Business-Driven IT Management?



...or, in simpler terms...



© Scott Adams, Inc./Dist. by UFS, Inc.

...have a corporate strategy and try to follow it!

Research on business-driven IT management

